

In 1963, Japan's first municipal winery opened in Ikeda Town based on an idea from the former mayor Kaneyasu Marutani. It conducted research on grape cultivation methods suitable for the cold climate of Tokachi, and developed cold-resistant grape varieties such as Yamasachi. Yamasachi was registered internationally as an original grape variety and became one of the most prominent brands of Tokachi Wine. Today, Tokachi Wine has a lineup of over 80 products, including brandy and Japan's first sparkling wine made through in-bottle secondary fermentation. They have fascinated many wine connoisseurs and visitors to the Wine Castle.

Built in 1974, the Wine Castle (officially called the Tokachi-Ikeda Research Institute for Viticulture and Enology) is a wine production facility that resembles an old European castle. It also features a corridor museum, a shop, and a restaurant. It has become a popular Tokachi sightseeing spot visited by locals and tourists alike.



**Tokachi Wine is  
the first municipal winery  
in Japan**

## Access



**By train to Ikeda Station**  
(10 mins on foot to Wine Castle)

- From Sapporo: 2 hrs 50 mins (Ltd. Exp. Ozora)
- From Minami-Chitose: 2 hrs 20 mins (Ltd. Exp. Ozora)
- From Obihiro: 25 mins (Local train)
- From Sapporo-Minami IC: 2 hrs 50 mins
- From Chitose-Higashi IC: 2 hrs 20 mins
- From Obihiro Station: 35 mins



**By car**



**By bus**

- From Obihiro Bus Terminal:  
1 hr (Tokachi Bus)



**By airplane**

- From Haneda Airport  
to Obihiro Airport: 1 hr 30 mins  
to Wine Castle: 50 mins by car

## Wine Castle

Kiyomi 83-4, Ikeda-cho, Hokkaido, Japan 083-0002

Hours: 9 : 00~17 : 00 Closed: Yearend holidays ※Restaurant closed Tue

Entrance fee: Free Parking: Free (100 slots)

※May be temporarily closed due to weather, etc.

Inquiries

<For sightseeing, restaurant, shopping, etc.>  
Ikeda Wine Castle TEL 015-578-7850



Website



Instagram

<For wine and other products>

Tokachi-Ikeda Research Institute for Viticulture and Enology TEL 015-572-2467

\ A facility about a famous pop band in Japan /

## DCTgarden IKEDA



This facility located in the grounds of the Wine Castle showcases the costumes and other archives related to Dreams Come True, one of the most renowned pop artists in Japan. You can also buy various original items.

DATA

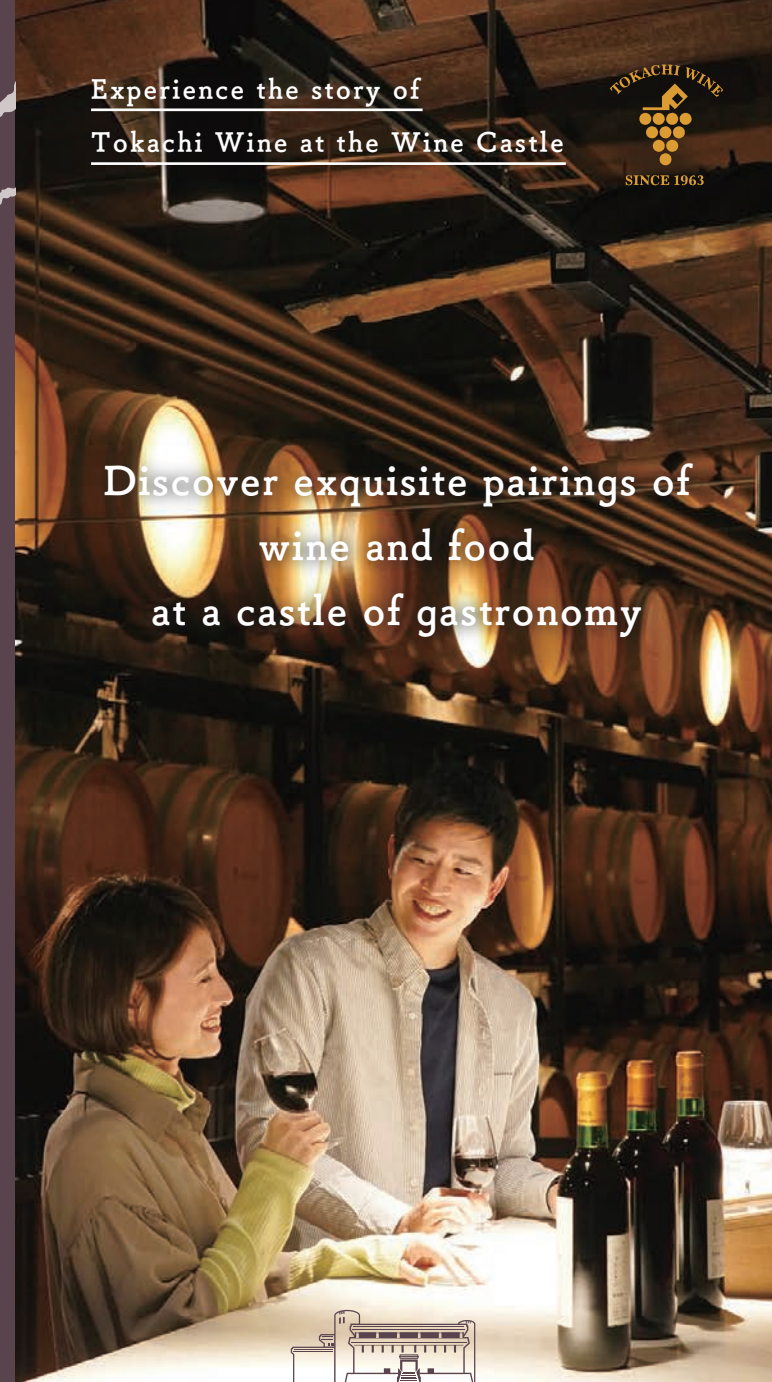
Hours: 10 : 00~16 : 00  
Entrance fee: Free

Closed: Tue, yearend holidays  
TEL: 015-572-3938

Experience the story of  
Tokachi Wine at the Wine Castle



Discover exquisite pairings of  
wine and food  
at a castle of gastronomy



**IKEDA WINE CASTLE**  
HOKKAIDO TOKACHI

Tokachi-Ikeda Research Institute for Viticulture and Enology



Sample over 15 different kinds of wine, from our red wine made from an Ikeda Town original grape variety, to our white wine, rosé wine, sparkling wine, dessert wine, brandy, and more. Taste the rich lineup of Tokachi Wine to find your very own favorite bottle.



※Fee required for wine tasting.  
※You must be at least 20 years old to drink alcohol.

## Wine Tasting



Yamasachi, one of the flagship products of Tokachi Wine



Bloom White, Japan's first sparkling wine made through in-bottle secondary fermentation

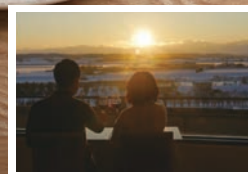


Umeshu Brandy Blend, made with Hokkaido green plums

Non-alcoholic grape juice and season-limited Yamasachi Ice Wine also available.



Savor the exquisite pairing of Tokachi Wine and various cuisine made from the quality ingredients of Ikeda Town and the Tokachi region. You can enjoy your meal while admiring a superb view of the townscape and the idyllic scenery of Tokachi. It's a special culinary experience available only at the Wine Castle.



## Gourmet



Ikeda beef



Hokkaido venison

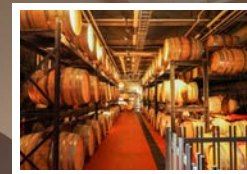


Donaldson trout



Soft serve

Other dishes you can enjoy at the 4F restaurant include Hamburg steak, pizza, and various desserts. You can also order them to go.



If you want a more in-depth experience of the Wine Castle, we offer a free guidance on weekdays. You can also join a Winery Tour held on Saturdays, Sundays, and holidays. The tour features an explanation of the history and production of Tokachi Wine, as well as wine tasting. Our dedicated staff will guide you into the world of Tokachi Wine.



### Wine Castle Free Guidance (weekdays)

2 times per day (no reservation required)

### Winery Tour (Sat/Sun/holidays)

2 times per day (up to 10 participants)

Fee and 2-day advance reservation required  
Check the official website for details and reservations.

## Winery tour

Wine Castle-exclusive  
"Yubae no Shiro"  
red/white/rosé wine



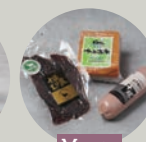
Cheese



Sweets



Yamasachi foods



Meats

You can buy exclusive wine bottles and other Ikeda Town products at the 1F shopping area.